



# BLUFFDALE TIMES

January 2026

## MAYOR'S MESSAGE

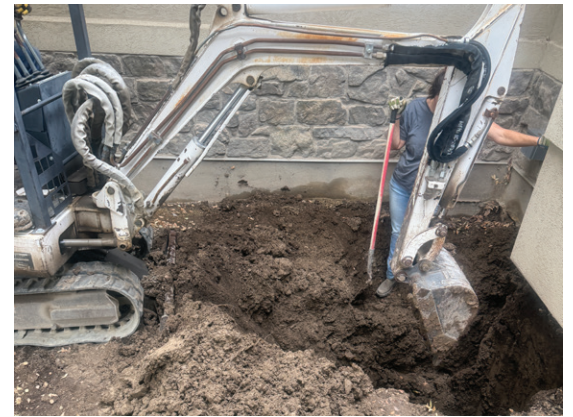


In October, on a Friday afternoon I received a phone call from Felicia in our utilities billing department. She had noticed that I had a continuous flow of water for weeks and that it was not a small amount of water.

I quickly looked in every room in the house for water damage or water seepage into our house. I could not see a problem. I started looking outside and still could not find the problem. Finally, I took a flashlight outside in the dark that night and noticed water pooling in the front where the water main comes into the house.

I quickly asked all the kids to fill buckets of water for the toilets and filled all our water jugs for drinking water and turned the water off at the street. The next day was spent digging out the front trying to find our main water line. As soon as we found it, we turned the water on and sure enough, we had Old Faithful in Bluffdale.

There had been so much water leaking, we noticed the ground was wet in the backyard as well. If Felicia had not called me, our problem could have been so much worse. Felicia then reminded me that Bluffdale has a new water portal that we can set up for a text or email alert if our household daily use goes over a certain amount.



Hole dug to find the water line break at the Hall residence. (Photo credit: Natalie Hall)

I am encouraging everyone to create an account (it does take some time to do this) and then sign up for a text or email alert. You can even set your alerts to notify you during your vacation when you are not home! If you have a hose that is left on, a leaking toilet or a water main break, you will be able to discover it a lot earlier than I did. Not only will you save yourself a lot of damage, but you will also save yourself from a very large water bill.

To set this up, you will need a copy of your water bill and then go to [www.bluffdale.gov/Water-Consumer-Portal](http://www.bluffdale.gov/Water-Consumer-Portal). This is where you can print off the instructions and login. Once you have your account, go to your profile (picture of a person) to sign up for the alerts. Thank you, Felicia, and team for working together to protect our residents.

### ELECTED OFFICIALS

#### Mayor:

Natalie Hall

#### City Council:

Wendy Aston

Steve Austin

Alan Lord

Mackey Smith

Greg Wilding

### MEETING SCHEDULE

<b>CITY COUNCIL @6:00 PM</b> January 14, 28   February 11, 25		<b>PLANNING COMMISSION @6:00 PM</b> January 21   February 4, 18	
<b>SECTION LEADERS @6:15 PM</b> January 6 February 3	<b>YOUTH COUNCIL @5:30 PM</b> January 20 February 17	<b>HAM CLUB @7:00 PM</b> January 6, 20 February 3, 17	<b>City Offices Closed:</b> New Year's Day: January 1 MLK Jr Day: January 19 President's Day: February 16
<b>ANIMAL LICENSING CLINIC @2-4 PM</b> January 7 February 4	<b>ARTS ADVISORY BOARD @8 AM</b> January 10 February 14	<b>HEALTHY BLUFFDALE @6:30 PM</b> January 13 February 10	

## CITY CONTACTS

2222 W 14400 S | 801-254-2200

Monday-Friday | 8:30 am-5:00 pm

[info@bluffdale.gov](mailto:info@bluffdale.gov)

### Emergency 911

**Police Non-Emergency**  
801-798-5600

**Public Works After Hours**  
801-559-7783

**SLCo Animal Control**  
801-743-7000

**Utility Billing**  
801-849-9403

**Business Licensing**  
801-849-9414

**Justice Court**  
801-849-9417



@bluffdalecity

## BEHIND THE BUDGET

City budgets are a clear expression of a city and its resident's priorities. You help shape where resources are focused and how City services are delivered. The City operates with finite financial resources. Balancing legal obligations with resident priorities requires careful planning to ensure fiscal responsibility.

The City wants feedback from residents. The City holds work sessions on the budget in May through the adoption of the budget in June. It has to make decisions that balance competing priorities between groups of residents, the long-term versus the short-term, and expert evaluations. Please come and both listen and express what you want. Express when you are happy as well! The most effective criticism is constructive.

I believe the City has greatly increased its transparency over the past several years. Two years ago, the City Council created a citizen Budget Review Committee. This committee has volunteer members, many with backgrounds in finance, who do not work for the City. These volunteers have spent hours

working with City staff to make the budget simpler for residents. The City now produces a budget book that gives narrative explanations of key changes as well as visualizations providing historical context and greater explanatory power.

The Budget Review Committee is working to produce a budget report that will compare Bluffdale with other cities. When the report is finished the Budget Review Committee will hold an open house to explain the report and provide context for residents. Please reach out with questions.

The City largely does a good job of balancing wants and needs with finite resources. Those things won't always align with what you want. But please recognize that the City is trying to make the right decisions.

All the Best,

Japheth McGee  
Budget Review Committee Chair  
801-358.4307  
[mcgeejapheth@gmail.com](mailto:mcgeejapheth@gmail.com)

## BLUFFDALE TIMES PODCAST

Felicia Didericksen, a Bluffdale City Accounting Technician, joins Mayor Natalie Hall for the January podcast. They discuss how to monitor your water usage with the new water portal available on the website.



Find links to all the listening platforms by scanning the QR code or at [www.bluffdale.gov/Podcast](http://www.bluffdale.gov/Podcast).

Thank you to Brian Hunter and The Farmhouse Recording Studio in Bluffdale for recording the podcast each month. Visit [www.farmhouserecording.com](http://www.farmhouserecording.com) to reserve studio time.



# Find out about the Consumer Water Portal!

Sign up to learn more about your water habits and avoid surprises on your water bill.

- Monitor consumption 24/7
- Create usage alerts
- Set water budgets
- Free for Bluffdale Residents

Learn more and register at  
[www.bluffdale.gov/Water-Portal](http://www.bluffdale.gov/Water-Portal)



Scan for more info



## CONSTITUTION BOWL COMING FEBRUARY 23

As part of the America250 celebration, residents of all ages are invited to test their knowledge of the U.S. Constitution at the Constitution Bowl on February 23. This fun and educational event encourages teamwork, friendly competition, and civic pride.

Teams of four participants will compete in age-based divisions: elementary school, middle school, high school, and adult. Teams may be made up of students from the same school or a mix of residents, as long as all members are in the same age group. Registration is open now through February 9 at [www.bluffdale.gov/America250](http://www.bluffdale.gov/America250). Once registration is received, a PDF study guide will be emailed to each team to help them prepare.

Whether you're a student, family, or group of friends, the Constitution Bowl is a great way to learn, connect, and celebrate America250 together. Gather your team and get ready for a spirited and informative competition.



AMERICA 250

## Family Night Story Teller

★ **MONDAY** ★  
**JAN 26<sup>TH</sup>**  
★ **6:30 PM** ★

**6:15pm** Rock Painting & Card Writing to Soldiers

**6:45pm** Betsy Ross

**7:00pm** George Washington • **7:15pm** Popcorn Break

**7:30pm** Elizabeth Freeman • **7:45pm** Ben Franklin

[www.bluffdale.gov](http://www.bluffdale.gov)

## BLUFFDALE BUSINESS BUZZ

Bluffdale is growing, and we're excited to welcome several new businesses to our thriving community!

Join us in extending a warm Bluffdale welcome to all the new business owners who have chosen to grow here. We look forward to seeing their positive impact and the continued energy they bring to our beautiful city!

Restorative Bodywork LLC

Bioscience Health Innovations Inc

Neon Forge 3D LLC

Lumina Care

Eyre Electric LLC

TruePath Consulting

Direct Meds

Electro Spec LLC



Follow on Facebook  
@ShopLocal-Bluffdale

## DO I NEED A BUSINESS LICENSE?

If you're starting, operating, or expanding a business in Bluffdale, you may be wondering if a city business license is required. In most cases, the answer is yes — including for home-based, online, or part-time businesses.

Business licensing helps ensure businesses operate safely, follow zoning requirements, and remain compatible with surrounding neighborhoods. It also supports fairness and consistency throughout the city.

If you're planning to open, relocate, or expand a business, reaching out early — especially before signing a lease or making improvements — can help prevent delays or unexpected costs.

Bluffdale welcomes home-based businesses, provided they comply with Home Occupation guidelines related to items such as traffic, parking, signage, and employees.

If you're unsure whether a license is required or have questions, please contact:

Kjersti Jarman, Bluffdale City Business License Official

801-849-9414

[kjarman@bluffdale.gov](mailto:kjarman@bluffdale.gov)



## NEW YEAR *Tips*

A New Year, A Renewed Focus on Safety!

As we step into the new year, it's a great opportunity to reflect on ways to enhance our daily lives. One meaningful resolution is prioritizing crime prevention. Small actions can go a long way in helping keep your family —and our community—safe in 2026.

- Secure Your Home & Stay Aware:** Double-check that doors, windows, and garages are locked. Pay attention to what's happening around your neighborhood.
- Practice Smart Online Habits:** Use strong, unique passwords, turn on two-factor authentication, and avoid oversharing personal details online.
- Safeguard Your Vehicle:** Always take your keys with you and keep valuables hidden to reduce the risk of theft.
- Speak Up When Something Feels Off:** If something doesn't seem right, trust your judgment and notify law enforcement—it could help stop crime before it happens.

# 14600 SOUTH CONSTRUCTION UPDATE

Since the road under the bridge on 14600 South closed on November 17, 2025, the contractor has hit the ground running — and there's already been a lot of progress on site.

## Utility Relocation

Work is underway to relocate utilities, including power and communication fiber, with completion expected by mid-January. This phase includes moving power lines underground. Several utility companies are coordinating closely to ensure everything is relocated safely and correctly.

## Dig, Dig, Dig

To make room for the new culvert boxes that will be pushed under the railroad tracks, the construction area needs to be substantially lowered (about 40 feet). Crews have already excavated most of the area needed for the boxes, to a depth of 14 feet. The excavated dirt is being placed on City



Image of construction property looking west.

property, and a part of this to be used on other projects.

## A Big Thank You to UDOT

As expected, traffic congestion increased after the bridge closure — especially along Porter Rockwell Boulevard. UDOT stepped up by opening the 600 West exit off Bangerter Highway early to help relieve congestion for drivers heading to I-15. They also re-striped lanes and adjusted signal timing at Redwood Road and Porter Rockwell Boulevard.

At Mayor Hall's request, UDOT also

will install a new traffic signal with a protected left-turn arrow for the intersection of Harmon Day Drive and Porter Rockwell Boulevard, drivers should see added relief at that intersection.

## Thank You, Bluffdale!

We appreciate everyone for your help and support. Please continue to plan, adjust your routes, and be patient during the closure. With winter weather ahead, new challenges may pop up — let's continue to look out for one another as construction moves forward.

**APPLICATIONS DUE JAN. 31ST**

**FOR WOMEN AGES 17-24**

Applications are open for the  
**Miss Bluffdale 2026 Scholarship Competition**

**OPEN HOUSE on Jan 10th from 2:00-3:30 pm**

Come ask questions and learn about the program

- Fostering Role Models
- Recognizing Excellence
- Empowering Young Women
- Learn Interview Skills

Reach out to the Pageant Director for questions!  
Karlie Dodds: 801-688-3500

Miss Bluffdale 2025  
Miss Bluffdale 2025  
Miss Bluffdale 2025

**Little Miss Bluffdale**

*Ages 5-11*

**Applications Open**  
\*Limited Space (First 25)

\$75 Application fee

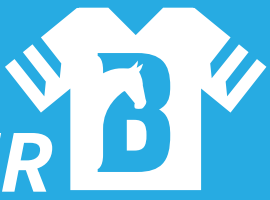
3 Months of Workshops  
Little Miss Bluffdale T-shirt  
Opening # Accessory  
Pageant Day Crown  
Pageant Day Flowers

**Sign up online NOW!**

Call the Director Karlie Dodds for any questions!  
801-688-3500

Workshop Dates TBD

# REC CORNER



[BLUFFDALE.GOV/RECREATION](http://BLUFFDALE.GOV/RECREATION)

## SPRING SOCCER REGISTRATION



Registration: February 2 - March 27  
Season: April 11-May 23

Pre-K (must be 3 by first game) - 7th grade

Resident: \$45 | Non-Resident: \$50  
Late Fee: \$5 (pending approval of waitlist)

\*If you miss the registration deadline, you can be placed on a wait list and if there is room on a team, you will be notified.

## VOLUNTEER COACHES NEEDED

Volunteer coaches who qualify will receive free registration. To qualify, complete Utah State Law requirements (driver's license, background check, and youth safety video) one week before the first game, and attend 75% of games. Details will be emailed.

Coaches Meeting: April 1st, 6 pm

## PICKLEBALL APRIL LEAGUE



Registration: February 9 - March 20  
Season: April 2-30

3.0-3.5 - Thursday 6:30-7:15pm  
4.0+ - Thursday 7:15-8:30pm

\$25 Resident | \$30 Non-Resident

All registration is individual. Each week players will be randomly assigned a partner per game for round robin play.



## HEALTHY BLUFFDALE COALITION

### Next in the Series: Screenagers NEXT CHAPTER

We are excited to announce our next community screenings:

- Saturday, January 10th at 9:30 AM
- Wednesday, January 21st at 6:30 PM

This powerful film focuses on the high rates of stress, anxiety, and depression experienced by young people in the digital age, while highlighting solutions for improved adolescent well-being.

To register, visit: [www.bluffdale.gov/screenagers](http://www.bluffdale.gov/screenagers)

Together, We're Building a More Connected Bluffdale Community.



fatCats

BLUFFDALE HEALTHY BLUFFDALE COALITION

SALT LAKE COUNTY HEALTH DEPARTMENT

Ages 14+

Showtimes:  
Jan 10<sup>th</sup> - 9:30 A.M.  
Jan 21<sup>st</sup> - 6:30 P.M.

Register at [www.bluffdale.gov/screenagers](http://www.bluffdale.gov/screenagers)

The first 100 to register receive a FREE POPCORN, SODA & FOOD ITEM!



## BLUFFDALE ARTS

Tickets on sale January 15.

# nickelodeon. THE SPONGEBOB MUSICAL

FEBRUARY 27-28  
MARCH 2, 5-7



## HAPPY NEW YEAR FROM THE YOUTH COUNCIL!

By Keeley Henderson, Bluffdale City Youth Council Communications

It's finally 2026, a year just as sure to be filled with fun community activities as the last. In December we had our best Santa and The Lights yet, it was a ton of fun helping kids write letters to Santa!

We are excited to announce our fourth annual Bingo Night! It will take place at Summit Academy High School on January 29th from 6-8 pm. It's a free, fun, family event and there are so many prizes to win. We hope to see you there!

The Youth Council has the awesome opportunity to be a part of Local Officials Day at the Legislature this year! Every year, youth councils from all over the state get the chance to go to the State Capitol and participate in mock floor debates to experience the energy of the Legislature in action and gain perspective on the issues that matter most to our communities. Governor Cox will be speaking at this event, making it an incredible chance for Utah's Youth Councils to be inspired by the state's top executive.



Right: The Youth Council helped children write letters to Santa during the Santa Claus is Coming to Bluffdale event on December 1, 2025. (Photo credit: Kristal Flynn)

## COMMUNITY HIGHLIGHTS

### SUMMIT ACADEMY INDEPENDENCE

One of our core values at Summit Academy Independence is to Brighten the World, and the holiday season gives our students meaningful opportunities to live out that value through service, creativity, and generosity. Our Elementary Choir and German DLI students helped spread joy with their voices at Bluffdale's Santa in the Park, Christkindlmarkt, and the Adventsingen at BYU. Thank you to teachers and volunteers who gave their time to make each event successful! That same spirit of generosity shone through our Brighten the World giving tree, where each year we place

ornaments for Summit Academy families in need. Students with their families can adopt an ornament and donate the gift to make the holiday special for someone in their community. This is our 12th year, and every ornament was adopted, bringing comfort and joy to many families this holiday season. We are also thankful for the compassion shown by one of our teachers who partnered with a local company to provide food for families during the holidays. Together, these acts of service reflect a school community committed to brightening the world through giving.

## START THE YEAR ON THE RIGHT PAW

### Get Your Pet Ready for a New Year

VACCINATE. MICROCHIP. LICENSE.



AdoptUtahPets.org



Salt Lake County Animal Services

A new year is the perfect time to make sure your pet is set up for a safe and healthy year ahead. Before life gets busy, take a moment to check off these important to-dos recommended by Salt Lake County Animal Services:

**VACCINATE:** Keeping your pet protected from preventable illnesses starts with staying current on vaccinations, including rabies. Reach out to your veterinarian to confirm your pet is up to date or to schedule an appointment.

**MICROCHIP:** Microchipping is one of the fastest ways to reunite lost pets with their families—and any pet living in Salt Lake County can receive a FREE microchip. Be sure to double-check that your pet's microchip registration has your current contact information.

**LICENSE:** Utah state law requires dogs to be licensed by five months of age or within 30 days of moving into the area (or becoming a new pet owner.) Learn more or get started at [AdoptUtahPets.org](http://AdoptUtahPets.org).

Have questions? Email [animal@saltlakecounty.gov](mailto:animal@saltlakecounty.gov) or stop by—no appointment needed—at 511 W 3900 S, Salt Lake City, Tuesday–Saturday, 10 AM–6 PM.

# Oath of Office Ceremony

January 5, 2026

Bluffdale City Hall (2222 W 14400 S)

Ceremony at 6:00 pm • Refreshments After



JANUARY 26

## RED CROSS BLOOD DRIVE

9:00 A.M. - 3:00 P.M.  
Bluffdale City Hall  
(2222 W 14400 S)

[redcrossblood.org](http://redcrossblood.org)

AMERICA



JANUARY 26

## FAMILY NIGHT STORYTELLER

6:30 P.M. - 8:00 P.M.  
Bluffdale City Hall  
Community Room  
(2222 W 14400 S)



JANUARY 29

## 4th Annual BINGO NIGHT

6:00 P.M. - 8:00 P.M.  
Summit Academy  
High School  
(14942 S 560 W)



JANUARY 31

## MISS BLUFFDALE & LITTLE MISS BLUFFDALE REGISTRATION ENDS



FEBRUARY 23

## CONSTITUTION BOWL

6:30 P.M.  
Bluffdale City Hall  
Community Room  
(2222 W 14400 S)

nickelodeon  
THE SPONGEBOB MUSICAL

FEBRUARY 27-28  
MARCH 2, 5-7

## SPONGEBOB SQUAREPANTS

Hidden Valley  
Middle School  
(15410 S Harmon Day Drive)



FEBRUARY 20

## YOUTH COUNCIL DANCE

Bluffdale City Hall  
Community Room  
(2222 W 14400 S)

# Riverton Senior Center January 2026 Apply Optimism



Image designed by Freepik



## Katy's Craft Corner: Valentines Day Cards

Tuesday, January 20th  
From 10-11am

## Music with Mundi

Thursdays from 1-2pm  
Starting January 15th

Join Erika Bright for 8 weeks of exploring your favorite songs and deepening your connection with music.



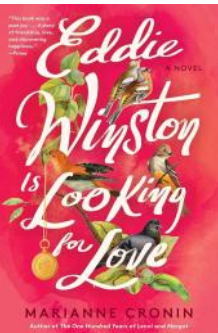
## Get U Moving



Tuesdays & Thursdays  
Mornings from 10-11am  
Afternoons from 1-2pm  
Starting Tuesday, January 13th

Join student instructors from the University of Utah's Kinesiology program. This class focuses on balance and strength techniques with modifications for those who need to remain seated.

Please sign up at the front desk or by calling the center.



**February Book Club**  
Eddie Winston is Looking for Love  
By Marianne Cronin

## AARP Presents: Smart Driver Course

**When:**  
February 19th from 9:30am-3:00pm

\*Pre-registration is required.

**AARP Member Cost:** \$20  
**Non-Member Cost:** \$25

- Refresh your driving skills and knowledge of the rules of the road.
- Learn techniques for handling left turns, right-of-way and roundabouts.
- Discover proven methods to help keep you and your loved ones safe on the road.

**Vital Aging (English):  
Aging & Independence**  
Tuesday, January 13th at 10:00am

**Vital Aging en español:  
Manteniendo la Independencia**  
Martes, Enero 27th en 10:00am

## Family Funeral Care Presents:

Skinwalker Ranch  
Thursday, January 8th at 10:30am

## Live Entertainment

**Oquirrh Hills Middle School**  
Tuesday, January 6th at 11:30am  
**Calvin Law**  
Friday, January 16th at 11:30am  
**Terry Spencer**  
Friday, January 30th at 11:30am

## CENTER INFORMATION

12914 South Redwood Rd.  
Riverton, Utah 84065  
Phone: 385-468-3040  
Open: 7:00<sup>am</sup> - 4:00<sup>pm</sup>  
Monday-Friday

## MORNING COFFEE

Available mornings from  
8:00<sup>am</sup> - 10:00<sup>am</sup>  
Suggested donation .50¢

**DINING ROOM LUNCH**  
Monday- Friday from  
11:30<sup>am</sup> - 12:15<sup>pm</sup>

**SUGGESTED DONATION**  
\$4.00 for 60+  
Under age 60 cost is \$7.00

**FREE TRANSPORTATION**  
Serving Riverton, Herriman  
& Bluffdale

**CENTER STAFF**  
Manager - Travis Woods  
gwoods@saltlakecounty.gov  
CPC - Hannah Ruth-Pond  
OS - Debbie Otteson

<https://www.saltlakecounty.gov/aging-adult-services/community/senior-centers/riverton/>

**SALT LAKE COUNTY**  
AGING & ADULT SERVICES

**Call 385-468-3040 to Register**

Monday	Tuesday	Wednesday	Thursday	Friday
--------	---------	-----------	----------	--------

			<b>1 CENTERS CLOSED</b>	<b>2</b>
<div style="display: flex; align-items: center;"> <div style="writing-mode: vertical-rl; transform: rotate(180deg); font-weight: bold; margin-right: 5px;">MOVIES</div> </div>				<p>8:00 Clogging 9:00 Lapidary 9:00 Zumba 9:45 Bingo* 12:00 Pottery* 12:30 Bunco* 1:00 EnhanceFitness</p>

5	6	7	8	9
---	---	---	---	---

<p>9:00 Yoga 9:00 Lapidary Cert 9:30 <b>Apollo 11</b> 10:00 ESL 10:30 Family Tree (register weekly) 12:30 <b>Apollo 11</b> 1:00 Line Dancing 1:00 EnhanceFitness 1:00 <b>Beginning Spanish</b></p>	<p>9:30 Knit/Crochet 10:00 Senior Ballet 10:30 Intermediate Guitar 11:30 Chair Yoga 11:30 <b>♪ Oquirrh Hills Middle School ♪</b> 12:30 Ceramics 12:30 Canasta 1:00 <b>Moveminds</b></p>	<p>9:00 Sewing Circle* 9:00 Lapidary 9:00 <b>Games*</b> 10:00 ESL 10:00 Glee Club 11:00 Dance Club 12:00 Pottery* 12:30 Texas Hold'em 1:00 Line Dancing 1:00 EnhanceFitness</p>	<p>9:30 Harmonica 9:30 Knit/Crochet 10:00 Computer 10:00 <b>Rock Painting with KC</b> 10:30 Casual Guitar 10:30 <b>FFC: Skinwalker Ranch</b> 11:00 Hawaiian/Belly Dance 12:00 Ukulele Class 12:30 Canasta 1:00 <b>Book Club</b> 1:00 Wood Carving 1:00 <b>Healing Conversations</b> 1:00 Chair Yoga 1:00 <b>Moveminds</b> 2:00 Tai Chi for Arthritis</p>	<p>8:00 Clogging 9:00 Lapidary 9:00 Zumba 9:45 Bingo* 12:00 Pottery* 12:30 <b>Mike Rose: Thomas Paine</b> 12:30 Bunco* 1:00 EnhanceFitness</p>
--	---	---	--	--

12	13	14	15	16
----	----	----	----	----

<p>9:00 Yoga 9:00 Lapidary Cert 9:30 <b>Selma</b> 10:00 ESL 10:30 Family Tree (register weekly) 12:30 <b>Selma</b> 1:00 Line Dancing 1:00 EnhanceFitness 1:00 <b>Beginning Spanish</b></p>	<p>9:30 Knit/Crochet 10:00 Senior Ballet 10:00 <b>Vital Aging: Aging &amp; Independence</b> 10:00 <b>Get U Moving</b> 10:30 <b>Coins with Gene</b> 10:30 Intermediate Guitar 11:30 Chair Yoga 12:30 Ceramics 12:30 Canasta 1:00 <b>Get U Moving</b> 2:00 <b>Moveminds</b></p>	<p>9:00 Sewing Circle* 9:00 Lapidary 9:00 <b>Games*</b> 10:00 ESL 10:00 Glee Club 11:00 Dance Club 12:00 Pottery* 12:30 Texas Hold'em 1:00 Line Dancing 1:00 EnhanceFitness</p>	<p><b>9:00 Caregiver Support</b> 9:30 Harmonica 9:30 Knit/Crochet 10:00 Computer 10:00 <b>Get U Moving</b> 10:30 Casual Guitar 11:00 Hawaiian/Belly Dance 12:00 Ukulele Class 12:30 Canasta 1:00 Wood Carving 1:00 <b>Get U Moving</b> 1:00 Chair Yoga 1:00 <b>Music with Mundi</b> 2:00 Tai Chi for Arthritis</p>	<p>8:00 Clogging 9:00 Lapidary 9:00 Zumba 9:45 Bingo* 11:30 <b>♪ Calvin Law ♪</b> 12:00 Pottery* 12:30 Bunco* 1:00 EnhanceFitness 2:00 <b>Moveminds</b></p>
--	---	---	--	---

19 CENTERS CLOSED	20	21	22	23
-------------------	----	----	----	----

	<p>9:30 Knit/Crochet 10:00 Senior Ballet 10:00 <b>Get U Moving</b> 10:00 <b>Valentine's Cards</b> 10:30 Intermediate Guitar 11:30 Chair Yoga 12:30 Ceramics 12:30 Canasta 1:00 <b>Get U Moving</b> 2:00 <b>Moveminds</b></p>	<p>9:00 Sewing Circle* 9:00 Lapidary 9:00 <b>Games*</b> 10:00 ESL 10:00 Glee Club 11:00 Dance Club 12:00 Pottery* 12:30 Texas Hold'em 1:00 Line Dancing 1:00 EnhanceFitness</p>	<p>9:30 Harmonica 9:30 Knit/Crochet 10:00 Computer 10:00 <b>Rock Painting with KC</b> 10:00 <b>Get U Moving</b> 10:30 Casual Guitar 11:00 Hawaiian/Belly Dance 12:00 Ukulele Class 12:30 Canasta 1:00 Wood Carving 1:00 <b>Get U Moving</b> 1:00 Chair Yoga 1:00 <b>Music with Mundi</b> 2:00 Tai Chi for Arthritis</p>	<p>8:00 Clogging 9:00 Lapidary 9:00 Zumba 9:45 Bingo* 10:30 <b>DSDHH: Meet &amp; Greet</b> 12:00 Pottery* 12:30 Bunco* 1:00 EnhanceFitness 2:00 <b>Moveminds</b></p>
--	--	---	---	--

26	27	28	29	30
----	----	----	----	----

<p>9:00 Yoga 9:00 Lapidary Cert 9:30 <b>Up</b> 10:00 ESL 10:30 Family Tree (register weekly) 12:30 <b>Up</b> 1:00 Line Dancing 1:00 EnhanceFitness 1:00 <b>Beginning Spanish</b></p>	<p>9:30 Knit/Crochet 10:00 Senior Ballet 10:00 <b>Get U Moving</b> 10:00 <b>Vital Aging: Manteniendo la Independencia</b> 10:30 Intermediate Guitar 11:30 Chair Yoga 12:30 Ceramics 12:30 Canasta 1:00 <b>Get U Moving</b> 2:00 <b>Moveminds</b></p>	<p>9:00 Sewing Circle* 9:00 Lapidary 9:00 <b>Games*</b> 10:00 ESL 10:00 Glee Club 11:00 Dance Club 12:00 Pottery* 12:30 Texas Hold'em 1:00 Line Dancing 1:00 EnhanceFitness 2:30 Bonus Bingo*</p>	<p>9:30 Harmonica 9:30 Knit/Crochet 10:00 Computer 10:00 <b>Get U Moving</b> 10:30 Casual Guitar 11:00 Hawaiian/Belly Dance 12:00 Ukulele Class 12:30 Canasta 1:00 Wood Carving 1:00 <b>Get U Moving</b> 1:00 Chair Yoga 1:00 <b>Music with Mundi</b> 2:00 Tai Chi for Arthritis</p>	<p>8:00 Clogging 9:00 Lapidary 9:00 Zumba 9:45 Bingo* 11:30 <b>♪ Terry Spencer ♪</b> 12:00 Pottery* 12:30 Bunco* 1:00 EnhanceFitness 2:00 <b>Moveminds</b></p>
--	--	---	--	--

\*Funded by the Advisory Committee