



*public input
update + preliminary
park analyses*

**PARKS, TRAILS, RECREATION +
OPEN SPACE MASTER PLAN**

2024 UPDATE

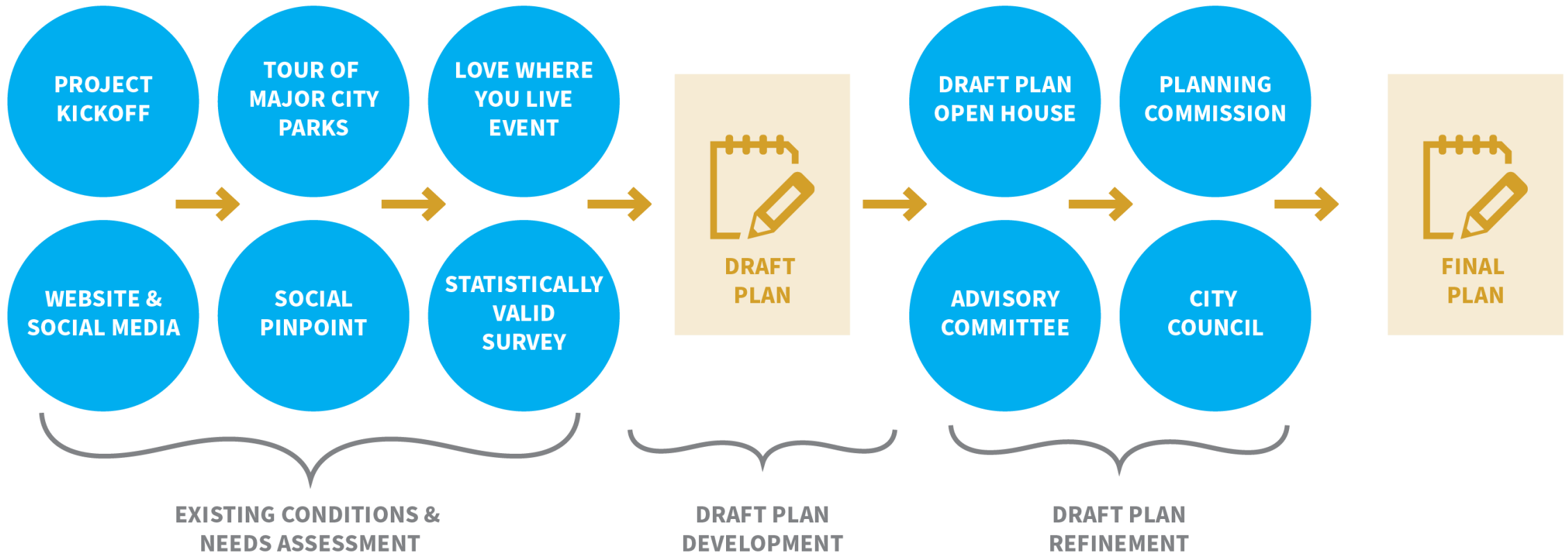


*public
input update*

**PARKS, TRAILS, RECREATION +
OPEN SPACE MASTER PLAN**

2024 UPDATE

Public Input Approach



Project Website

Website Stats

565 Page Views

288 Unique Visitors

29 Email List Sign-Ups

2 Comments



The screenshot shows the homepage of the City of Bluffdale project website. The background is a blue aerial map of the city. At the top, the text "connecting the dots" is displayed in white. Below this, a horizontal line of six circular images is connected by a thin blue line. The first circle contains the City of Bluffdale logo (a stylized 'B'). The subsequent circles show various park and trail scenes, including a playground, a paved path, and a park building labeled "Vintage Park". Below the images, the text "CITY OF BLUFFDALE" is centered in white, followed by "PARKS, TRAILS, RECREATION AND OPEN SPACE MASTER PLAN UPDATE" in a smaller font. At the bottom, a blue navigation bar contains the City of Bluffdale logo on the left and the links "HOME", "ENGAGE", "PROJECT STATUS", and "CONTACT" on the right.

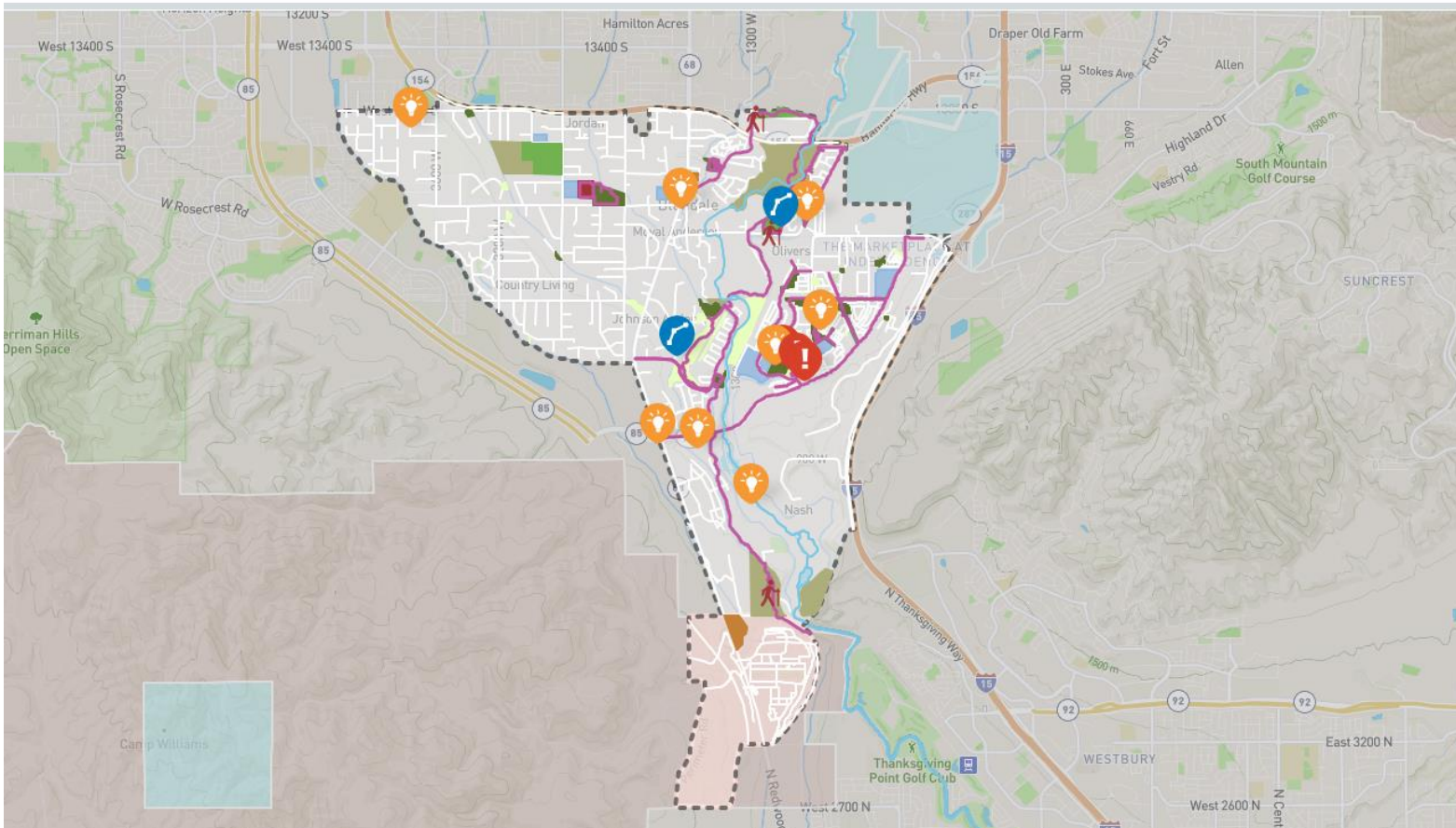
Comments (there are just 2)

“I was curious if there have been any talks about an archery range being put in? Bluffdale seems to be one of the last pieces of the valley holding onto the outdoors and adventure and would love to have something like this available.”

“I live on the west side and love to bike. When the new bridge went in, the connection to the Jordan River trail was broken. An island prevents you from reconnecting to the paved path without crossing many lanes of traffic. I hope the reconnection will take place soon. We also have to cross redwood to get to the trail at 14400 south and then ride without bike lanes to get to the Springview Farms trailhead. Better connections for the west side would be appreciated.”

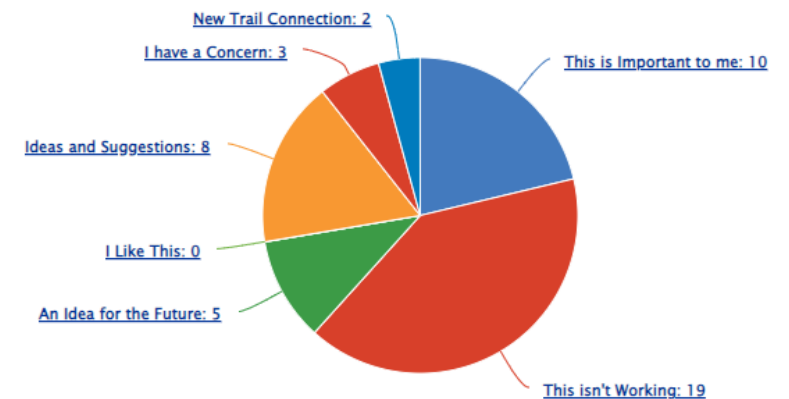
Social Pinpoint Interactive Map

Drag to comment >  I Like This  Ideas and Suggestions  I have a Concern  New Trail Connection



Comment Totals

- 19 This isn't working
- 10 This is important to me
- 8 Ideas and Suggestions
- 5 An idea for the future
- 3 I have a concern
- 2 New trail connection
- 0 I like this



Social Pinpoint Interactive Map

- **Pedestrian connectivity & safety**
 - Safe crossings + connected sidewalks (i.e. cross-city, to JRT, parks, neighborhoods)
 - Safe Routes to School
 - Utilize canals - pedestrians & equestrians
- **Recreation**
 - Construct, connect it to the JRT/trail network
- **Jordan River**
 - Protect river, trail, and open space
- **Day Ranch Park**
 - Complete it
 - Add more seating + trash receptacles
- **Independence Park**
 - Add pickleball courts + basketball courts
- **On-Street Parking**
 - Safe sight triangles

Love Where You Live Event

POSTER A

PROMT 1: Which Park and Recreation amenities are most important to you? Place a sticker next to the recreation amenities you see as most important. (# = total stickers)



1. Swimming Pool (36)
2. Splash Pad/ Spray Park (32)
3. Playgrounds (29)
4. Walking & Biking Trails (20)
5. Dog Park (15)
6. Skate Park (14)
7. Rodeo Grounds (13)
8. Baseball/ Softball/ Football Fields (12)
9. Picnic Areas (11)
10. Sports Courts (10)
11. Fishing Pond (3)
12. Sledding Hill (2)
13. Other (1)



Love Where You Live Event

POSTER B

PROMPT 1: How do you typically get to your favorite Bluffdale City park, trail, or recreation facility? Place a sticker next to the transportation mode that you typically use to get to your favorite park(s) and/or trail(s). (# = total stickers)

1. Bike or other User-Powered Mode (19)
2. Walk or Jog (12)
3. Drive (12)

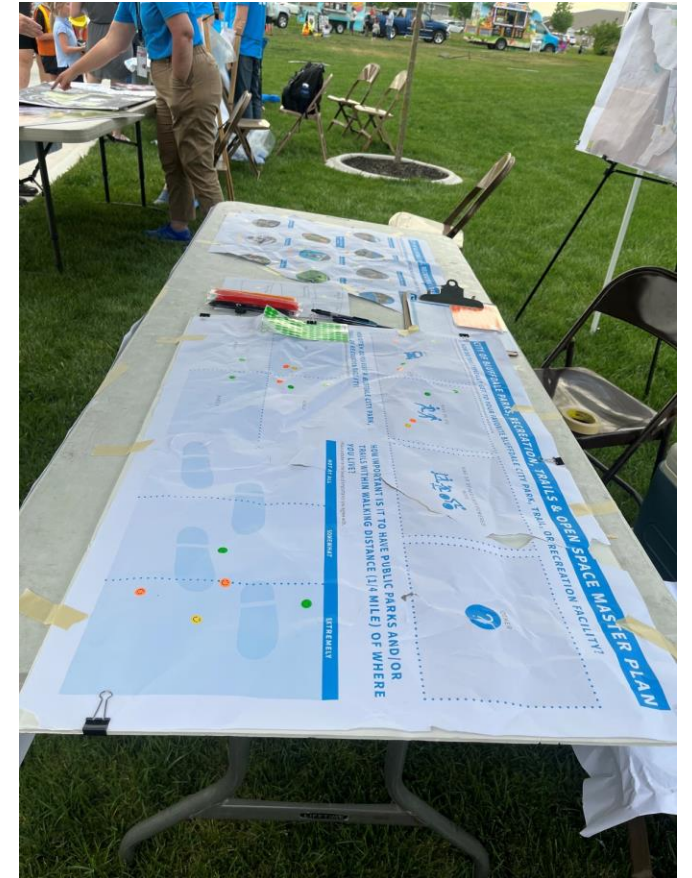


PROMPT 2: How often do you visit a Bluffdale City Park, Trail, or Recreation Facility? Place a sticker in the quadrant that represents how often you visit. (# = total stickers)

1. Daily (12)
2. Weekly (11)
3. Monthly (3)
4. Rarely (2)
5. In-between Daily & Weekly (2)

PROMPT 3: How important is it to have public parks and/ or trails within walking distance (1/4 mile) of where you live? Place a sticker in the level of importance you agree with. (# = total stickers)

1. Extremely Important (13)
2. Somewhat Important (4)
3. Not at all (2)
4. In-between Somewhat & Extremely (1)





*preliminary park
analyses*

**PARKS, TRAILS, RECREATION +
OPEN SPACE MASTER PLAN**

2024 UPDATE

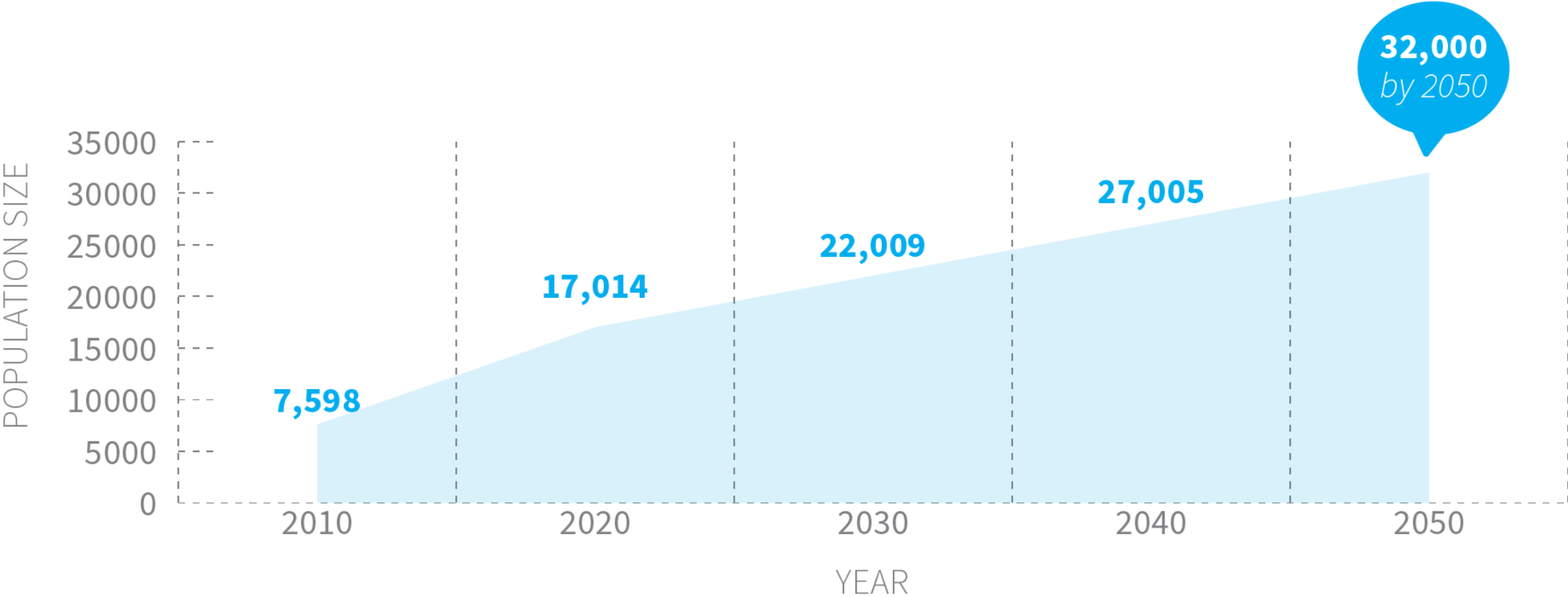
Determining Park Needs

TOOLS

1. Level of Service (LOS) Analysis
2. Amenity LOS Analysis (coming soon)
3. Distribution Analysis

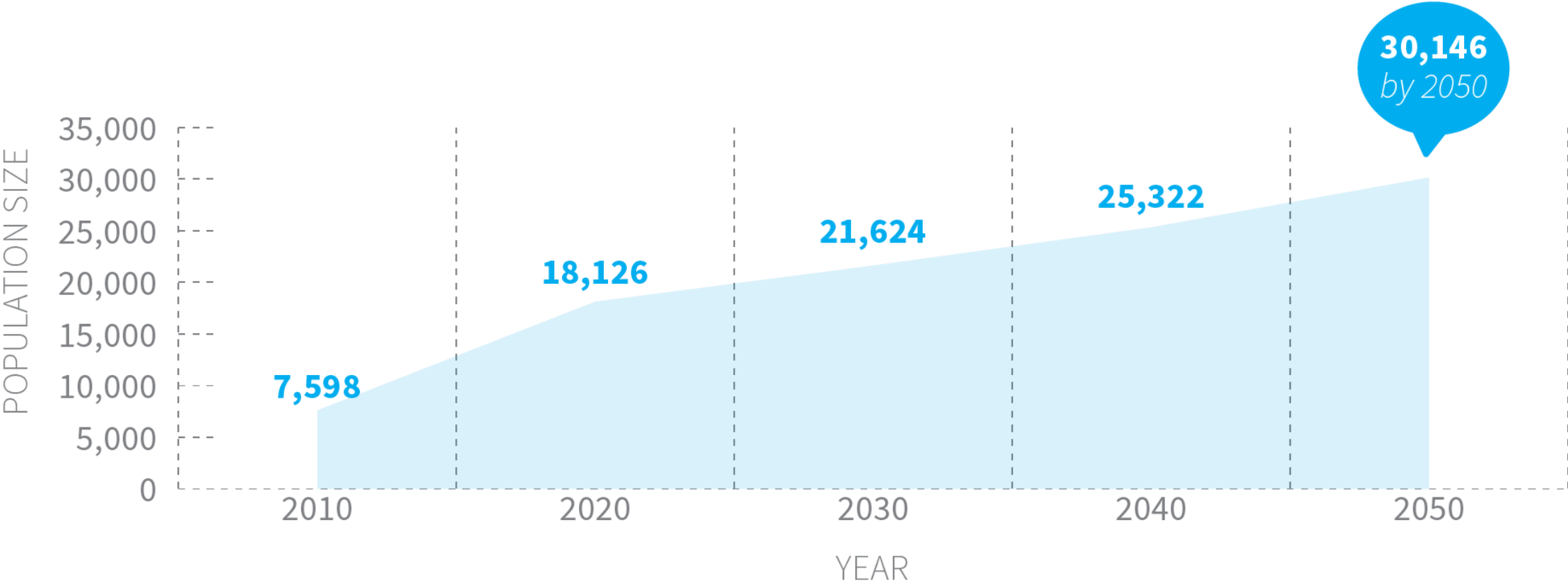


Projected Population Growth (2010- 2050)

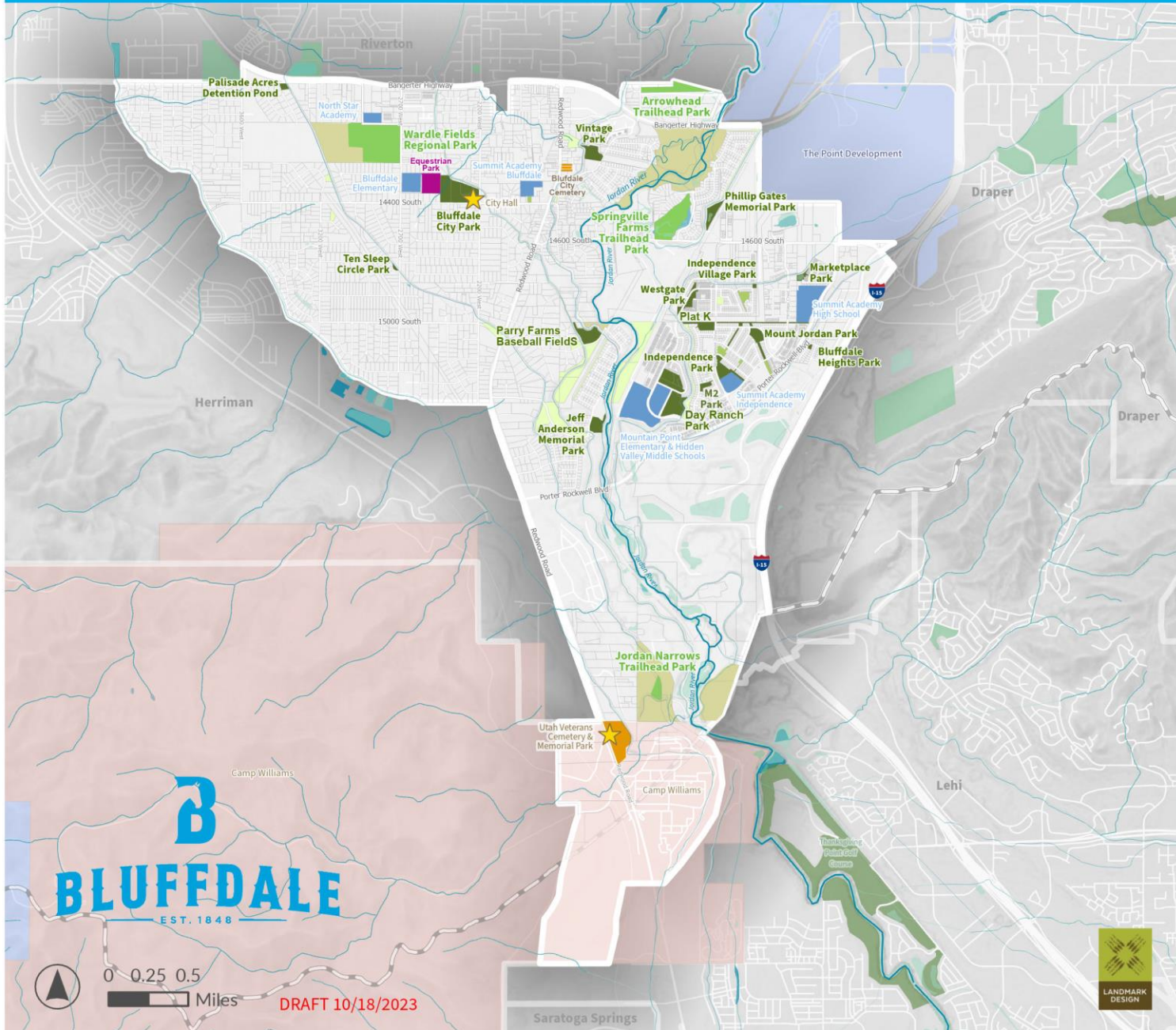


Data Source: Census/ Bluffdale General Plan

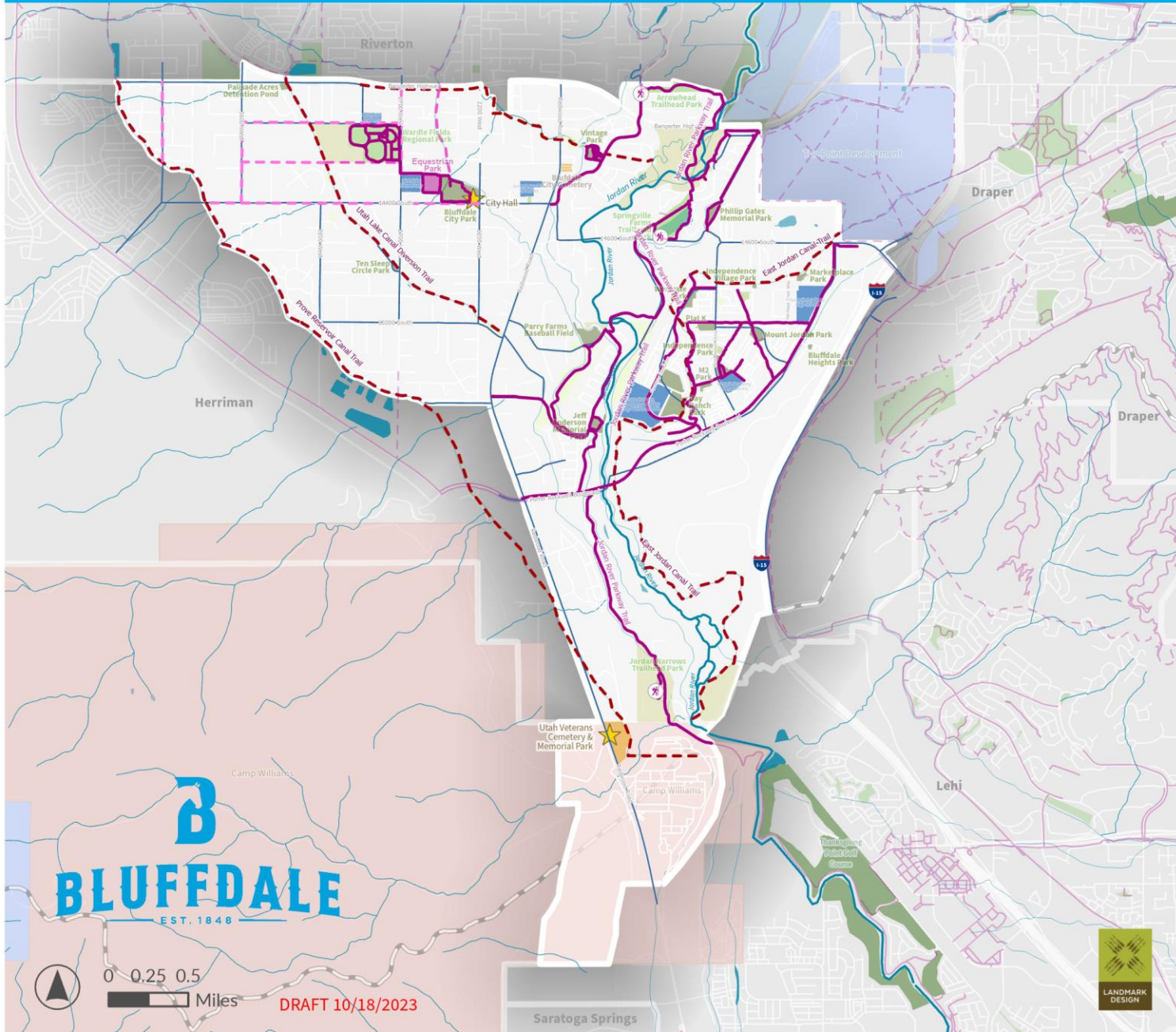
Projected Population Growth (2010- 2050)



Data Source: WFRC Population Projections (City Area) - RTP 2023



- ★ Point of Interest
- City Park
- City Owned Open Space
- Special Use
- Salt Lake County Park
- County Owned Open Space
- Cemetery
- Private Park
- Parks in Adjacent Communities
- Golf Course
- School
- Federal Land
- State Land
- Wetland
- Waterbody
- Jordan River
- Canal/Ditch
- Stream/River
- ▭ County Boundary



- Trailheads
- Point of Interest
- Existing Trails
- Proposed Local Trails
- Proposed Regional Trails
- Planned Bike 2017
- DraperTrailsExisting
- DraperTrailsProposed
- City Park
- City Owned Open Space
- Special Use
- Salt Lake County Park
- County Owned Open Space
- Cemetery
- Private Park
- School
- Golf Course
- Parks in Adjacent Communities
- Federal Land
- State Land
- Jordan River
- Canal/Ditch
- Stream/River
- County Boundary

B
BLUFFDALE
 EST. 1848



DRAFT 10/18/2023



Park Type by Acreage

City Parks

Regional Parks	n/a
Community Parks	43.0 acres
Neighborhood Parks	28.9 acres
Pocket Parks	14.1 acres
	<hr/>
	86.0 acres total (contributing to LOS)

Other Parks

Special Use Parks	10.7 acres
County Parks	164.9 acres
	<hr/>
	175.6 acres total (supplement service levels)

Existing LOS for Parks



LEVEL OF SERVICE RATIO

(Existing Park Acres / 2024 Population*) x 1,000

- **$(86.0 / 19,012 \times 1,000) = 4.5$**

**based on General Plan projections*

IF NO ADDITIONAL PARKS ARE DEVELOPED

2034 = 3.6

2050 = 2.7

LOS Comparison

COMMUNITY	LOS
St. George	5.7
Springville City	5.1
Mapleton City	4.9
Provo	4.8
Spanish Fork	4.7
Bluffdale City	4.5
South Jordan	4.4
Salem	4.3
Sandy	3.8
Draper	3.7
Herriman	3.7
Saratoga Springs	3.7
Lehi	3.6
West Jordan	2.9
Orem	2.8



Park Distribution Analysis



Pocket Parks ¼-mile radius (typical walking distance for park with minimal amenities)



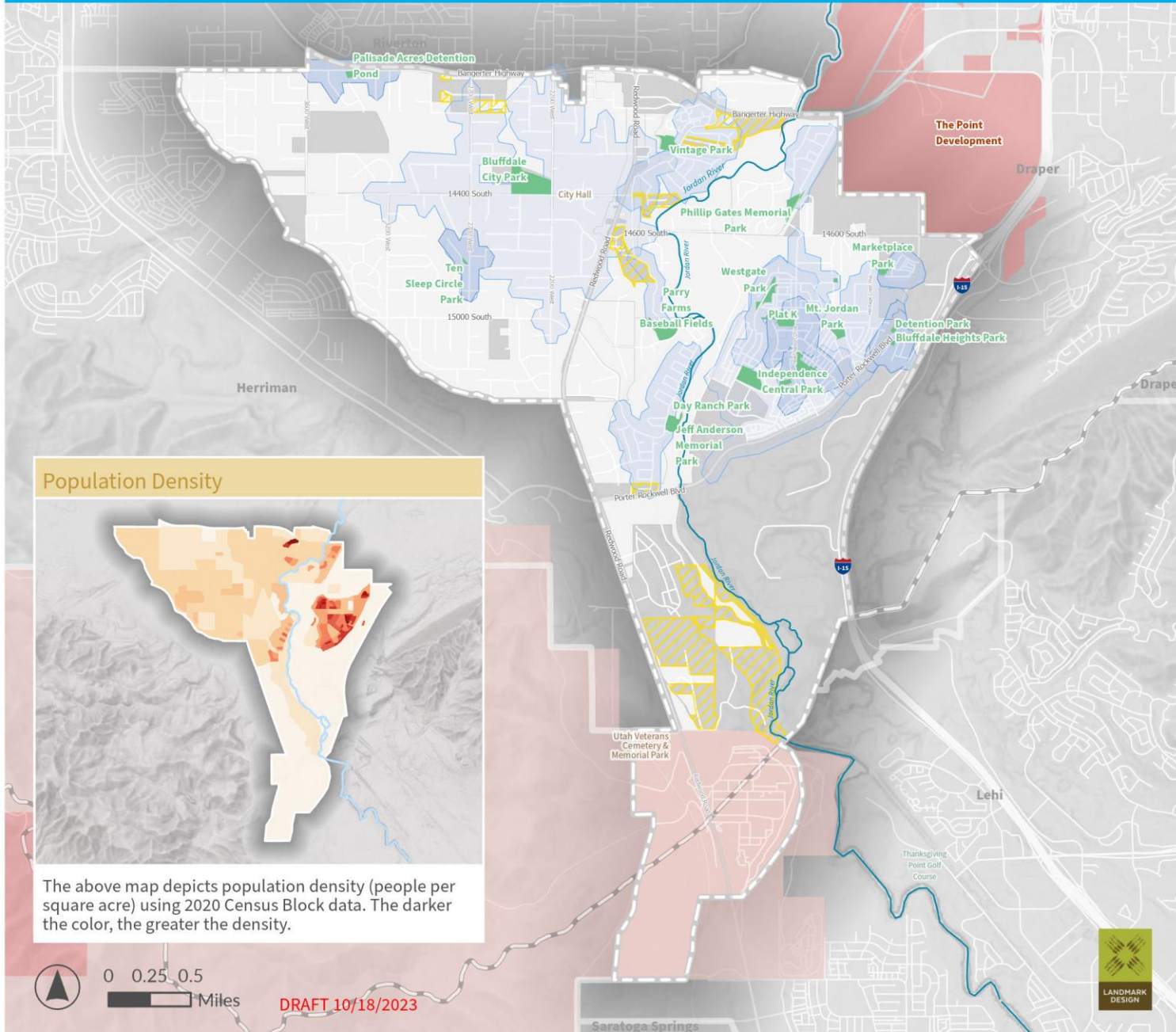
Neighborhood Parks ½-mile radius (typical walking distance for park a small variety of amenities)



Community Parks 1-mile radius (typical driving distance for park with a good variety amenities)



Regional Parks 2-mile radius (typical driving distance for park with significant amenities)



- Existing City Parks
- Pocket Park Service Area - .25 mile
- Neighborhood Park Service Area - .5 mile
- Community Park Service Area - 1 mile
- Federal Land
- State Land
- Bluffdale City Boundary
- County Boundary
- Existing Residential
- Future Residential

Population Density

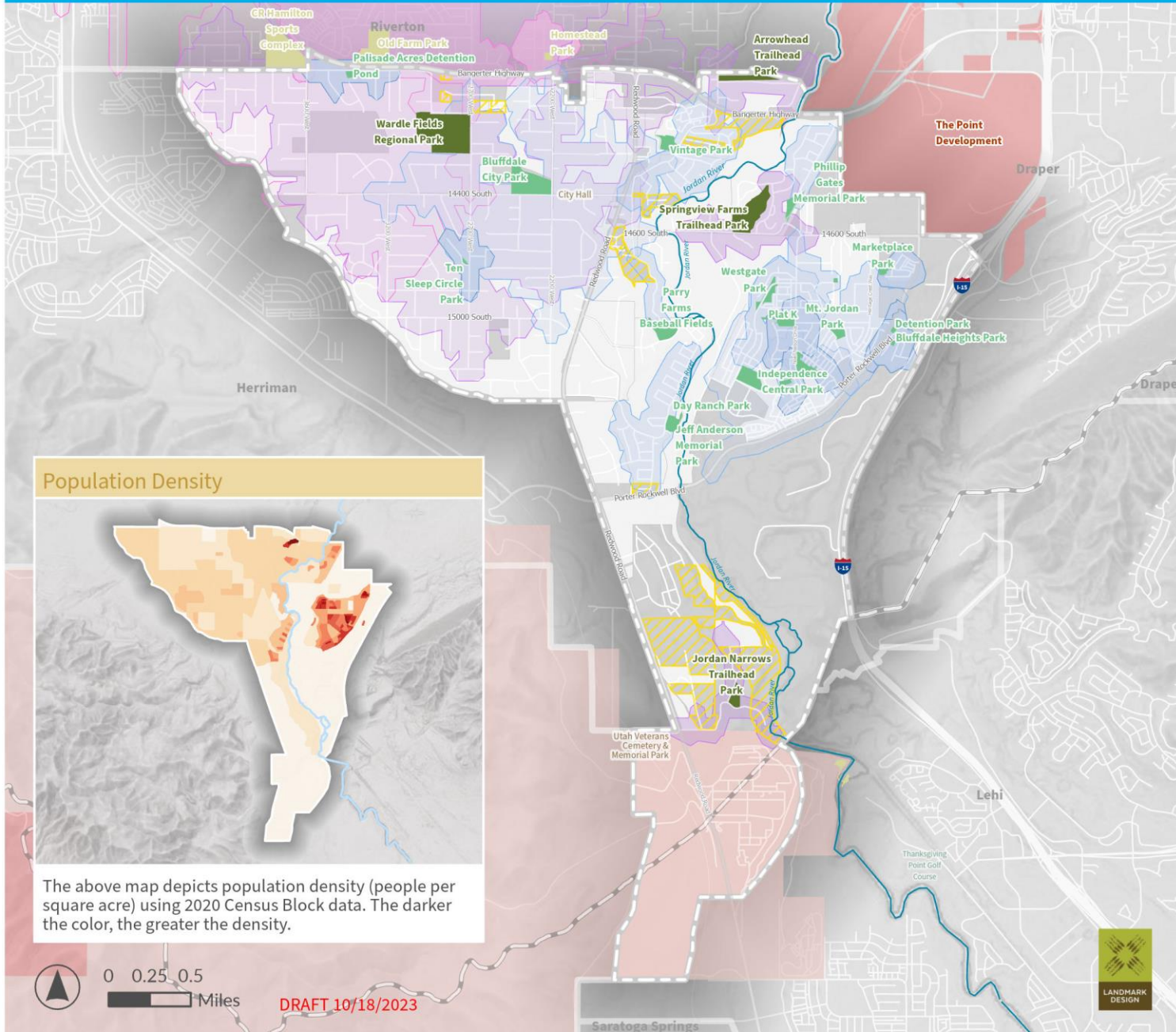
The above map depicts population density (people per square acre) using 2020 Census Block data. The darker the color, the greater the density.



0 0.25 0.5
Miles

DRAFT 10/18/2023





- Existing City Parks
- County Parks
- Adjacent Parks
- Pocket Park Service Area - .25 mile
- Neighborhood Park Service Area - .5 mile
- Community Park Service Area - 1 mile
- County Park Service Area - .5 mile
- Wardle Regional Park Service Area - 2 miles
- Adjacent Park Service Areas
- Federal Land
- State Land
- Bluffdale City Boundary
- County Boundary
- Existing Residential
- Future Residential

Population Density

The above map depicts population density (people per square acre) using 2020 Census Block data. The darker the color, the greater the density.



0 0.25 0.5 Miles

DRAFT 10/18/2023



Trails Distribution Analysis Map Coming Soon

Future LOS for Parks



Future LOS for Parks



MAINTAINING CURRENT LOS 2034

2034 Population	24,007
Future LOS	4.5
Total Park Acres Required by 2034	108.6
Existing Park Acres	86.0
Additional Park Acres Required by 2034	22.6

MAINTAINING CURRENT LOS 2050

2050 Population	32,000
Future LOS	4.5
Total Park Acres Required by 2050	144.8
Existing Park Acres	86.0
Park Acres Required by 2034	22.6
Additional Park Acres Required by 2050	36.2



Thank you!